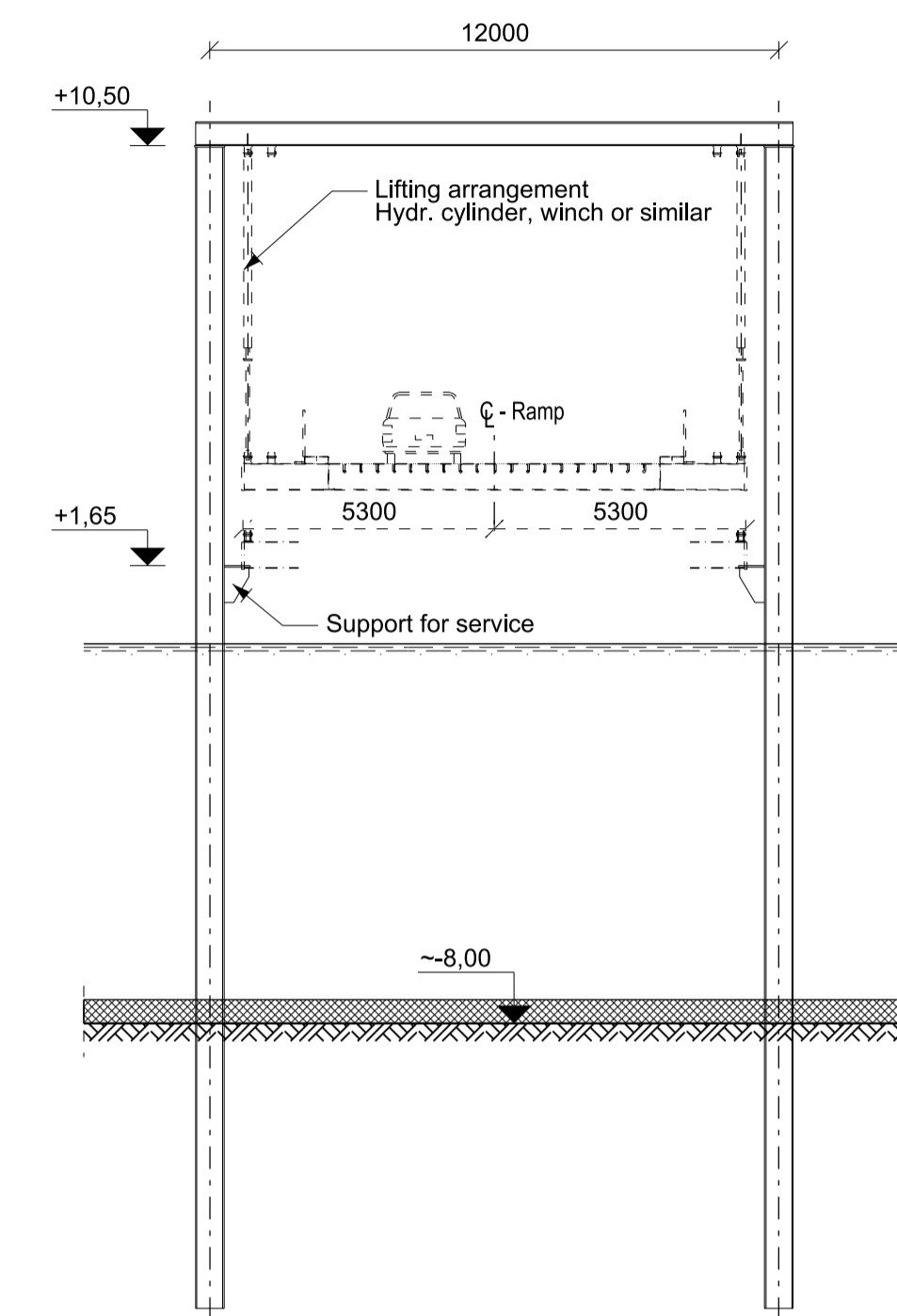
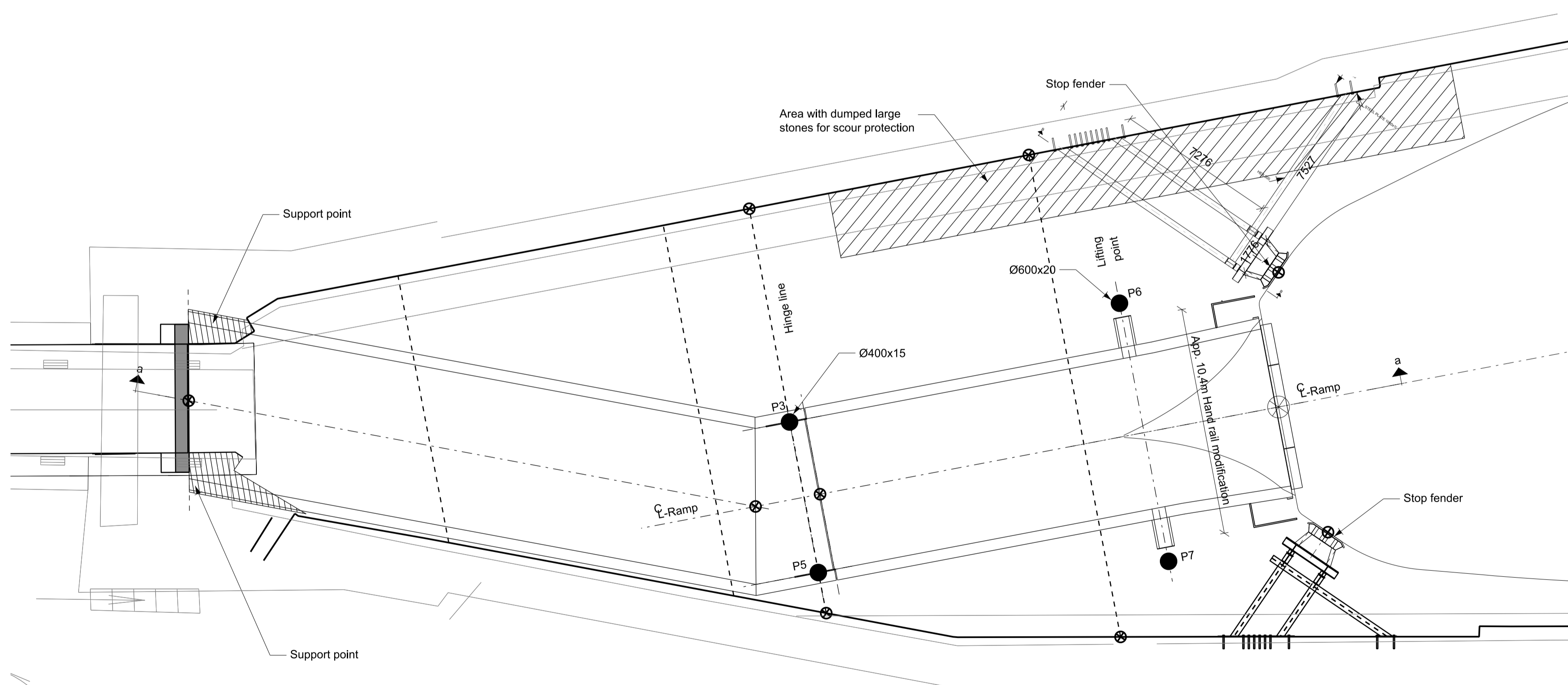


SECTION a-a, 1:150
Submerged breakwater



SECTION b-b, 1:150



PLAN, 1:150

NOTE:
All levels are in m DVR90
Dimensions are in mm unless stated otherwise

It was not possible to locate the existing plan drawings of Berth 1, but it seems to be constructed according to Berth 2. Berth 2 layout is shown, mirrored around centerline of Berth.

SIGNATURE:

- Precast concrete
- Existing concrete structure
- Pavement
- Sand
- Angular rock armour

(+x.xx) Levels converted from DNN to DVR90

REFERENCES:
See drawing SWE-1-01 for plan view Berth 1 and pile coordinates

Revision/Text	Desig./Drawn	Controlled	Approved	Date
Designed/Drawn	THJO		Approved	
SEKA		HENH		
Project no.	Scale	Date		Page
23,0510.21	1:150	2022-06-27		

Rødby Ferry Port Reconstruction PR24



PR24
Layup Berth
Piles for ramp (Option) SWE-1-91