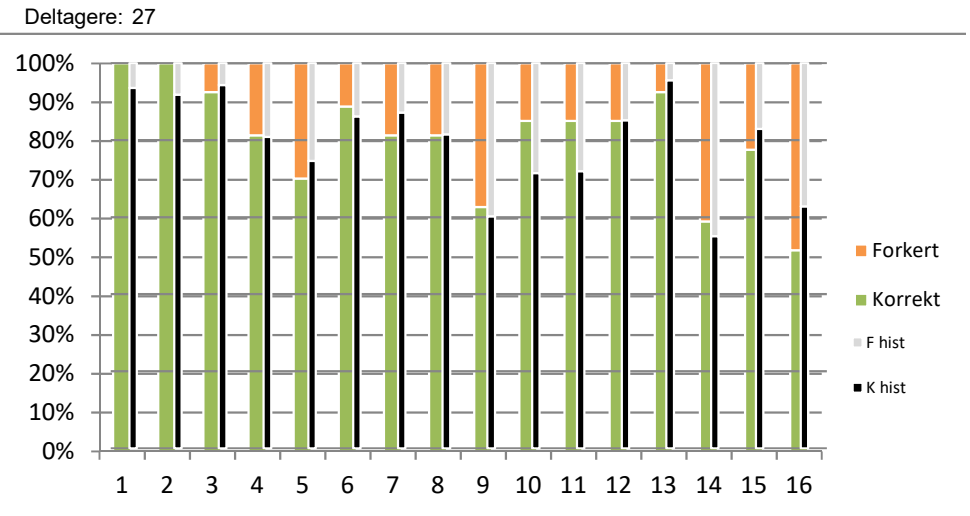
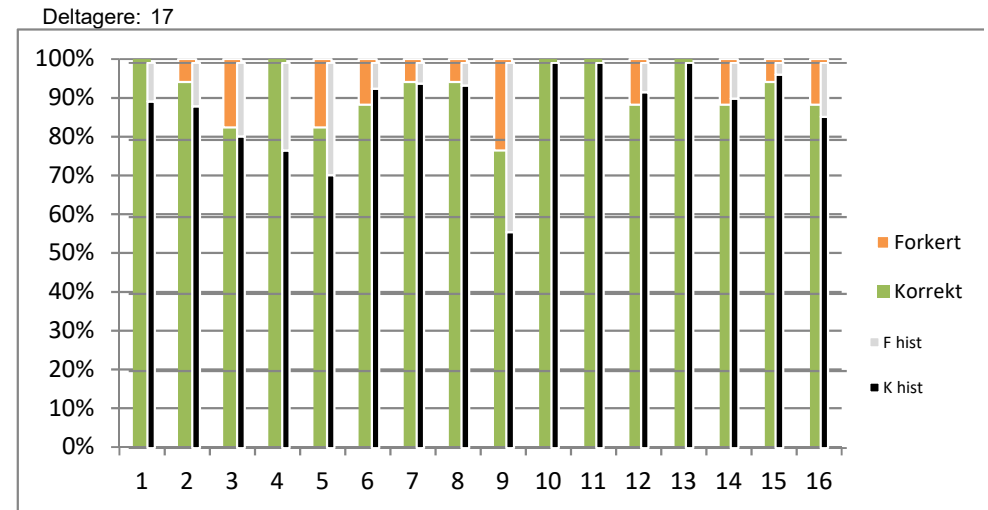


Grafik: Hver enkelt spørgsmåls præstation i prøven, sammenholdt med tidligere prøver.

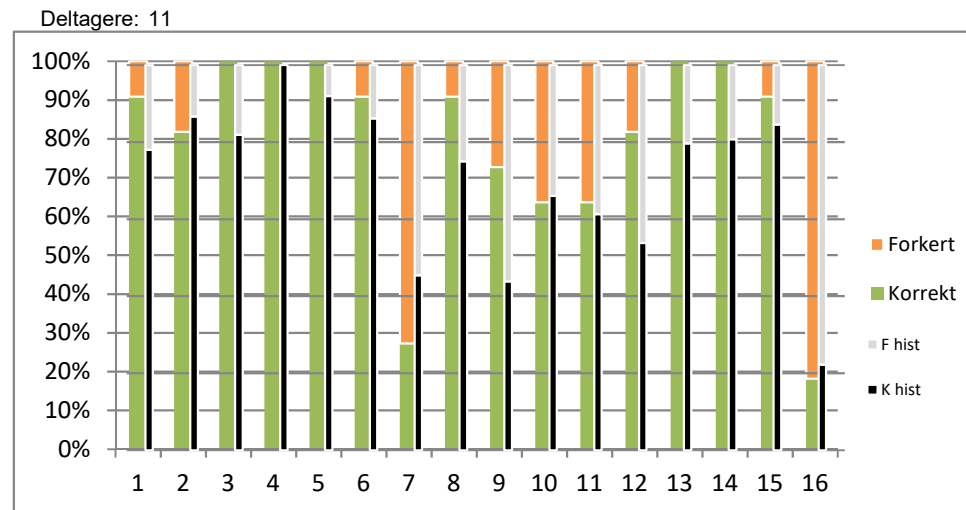
Fag 1 QNR LMR		Besvarelser dec-17			Svarmuligheder				Historisk, sep 16 til DEC 17			
		QID	Forkerte	Korrekte	Total	1	2	3	4	F	K	T
1	1 . 10 . 1	143	0	27	27	0	0	0	4	58	62	
2	1 . 10 . 1	146	0	27	27	0	0	0	9	##	##	
3	1 . 10 . 1	156	2	25	27	0	25	1	1	2	33	35
4	1 . 10 . 1	6	5	22	27	22	4	0	1	9	38	47
5	1 . 10 . 1	12	8	19	27	5	19	0	3	16	47	63
6	1 . 10 . 1	307	3	24	27	1	2	0	24	8	50	58
7	1 . 10 . 1	453	5	22	27	0	4	1	22	9	61	70
8	1 . 10 . 1	539	5	22	27	5	0	0	22	5	22	27
9	1 . 10 . 1	544	10	17	27	6	17	0	4	37	56	93
10	1 . 11 . 1	612	4	23	27	3	23	0	1	18	45	63
11	1 . 12 . 1	541	4	23	27	1	3	0	23	30	77	##
12	1 . 12 . 1	607	4	23	27	2	2	23	0	4	23	27
13	1 . 15 . 1	546	2	25	27	25	1	1	0	5	##	##
14	1 . 23 . 1	154	11	16	27	2	16	0	9	44	54	98
15	1 . 28 . 1	609	6	21	27	21	6	0	0	20	97	##
16	1 . 35 . 1	15	13	14	27	14	2	9	2	16	27	43
<i>Checksum: 27</i>												



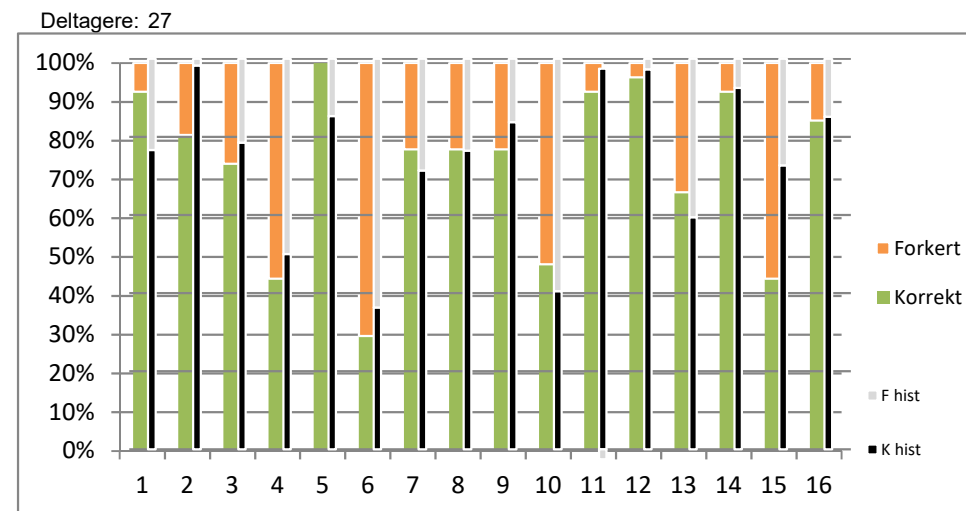
Fag 2 QNR LMR		Besvarelser dec-17			Svarmuligheder				Historisk, sep 16 til DEC 17			
		QID	Forkerte	Korrekte	Total	1	2	3	4	F	K	T
1	2 . 1 . 0	159	0	17	17	0	0	0	3	27	30	
2	2 . 2 . 1	160	1	16	17	1	0	0	16	7	55	62
3	2 . 3 . 2	17	3	14	17	2	1	0	14	4	17	21
4	2 . 5 . 2	18	0	17	17	0	17	0	0	20	68	88
5	2 . 6 . 2	385	3	14	17	0	3	14	0	14	34	48
6	2 . 7 . 2	22	2	15	17	1	0	1	15	4	56	60
7	2 . 8 . 2	171	1	16	17	0	1	16	0	4	71	75
8	2 . 9 . 0	471	1	16	17	0	0	1	16	1	16	17
9	2 . 10 . 2	402	4	13	17	4	0	13	0	29	37	66
10	2 . 12 . 3	467	0	17	17	0	0	0	17	0	21	21
11	2 . 17 . 0	383	0	17	17	0	0	0	17	0	47	47
12	2 . 20 . 0	166	2	15	17	1	0	1	15	5	61	66
13	2 . 21 . 0	460	0	17	17	0	0	0	17	0	21	21
14	2 . 22 . 0	380	2	15	17	15	1	0	1	5	49	54
15	2 . 24 . 3	374	1	16	17	16	1	0	0	2	64	66
16	2 . 2 . 1	616	2	15	17	0	0	2	15	8	49	57
<i>Checksum: 17</i>												



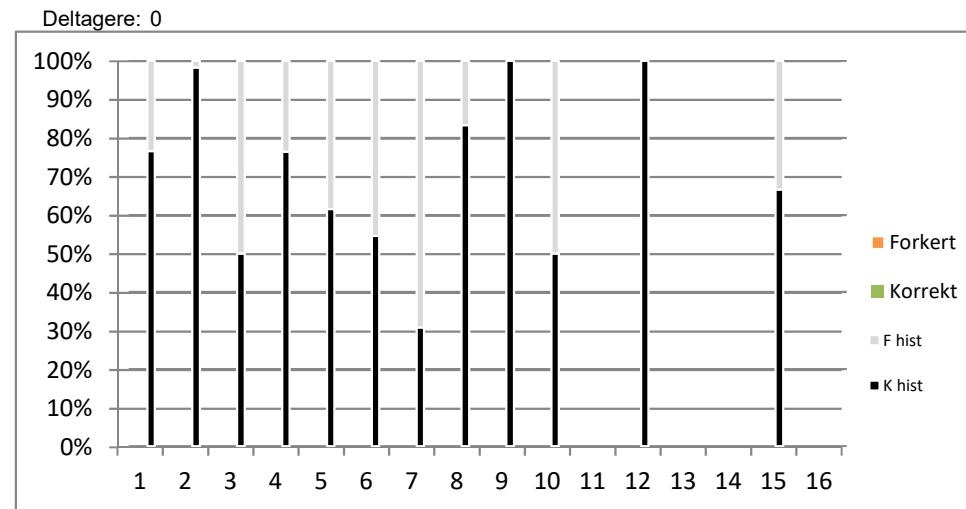
Fag 3 QNR LMR	QID	Besvarelser dec-17			Svarmuligheder				Historisk, sep 16 til DEC 17		
		Forkerte	Korrekte	Total	1	2	3	4	F	K	T
1	3 . 4 . 0	36	1 10	11	0	10	1	0	18	64	82
2	3 . 11 . 0	412	2 9	11	9	2	0	0	2	13	15
3	3 . 16 . 0	174	0 11	11	0	0	11	0	11	50	61
4	3 . 19 . 0	175	0 11	11	0	11	0	0	0	11	11
5	3 . 26 . 0	185	0 11	11	0	0	11	0	4	46	50
6	3 . 30 . 0	313	1 10	11	0	0	1	10	4	25	29
7	3 . 44 . 0	188	8 3	11	7	3	1	0	18	15	33
8	3 . 47 . 0	179	1 10	11	1	10	0	0	7	21	28
9	3 . 48 . 0	405	3 8	11	0	1	8	2	32	25	57
10	3 . 62 . 0	406	4 7	11	0	3	1	7	19	37	56
11	3 . 80 . 0	484	4 7	11	0	7	4	0	12	19	31
12	3 . 87 . 0	317	2 9	11	2	9	0	0	24	28	52
13	3 . 89 . 0	561	0 11	11	0	11	0	0	13	51	64
14	3 . 21 . 0	623	0 11	11	11	0	0	0	5	21	26
15	3 . 13 . 1	628	1 10	11	10	0	1	0	6	33	39
16	3 . 38 . 0	315	9 2	11	8	2	0	1	14	4	18
				Checksum: 11							



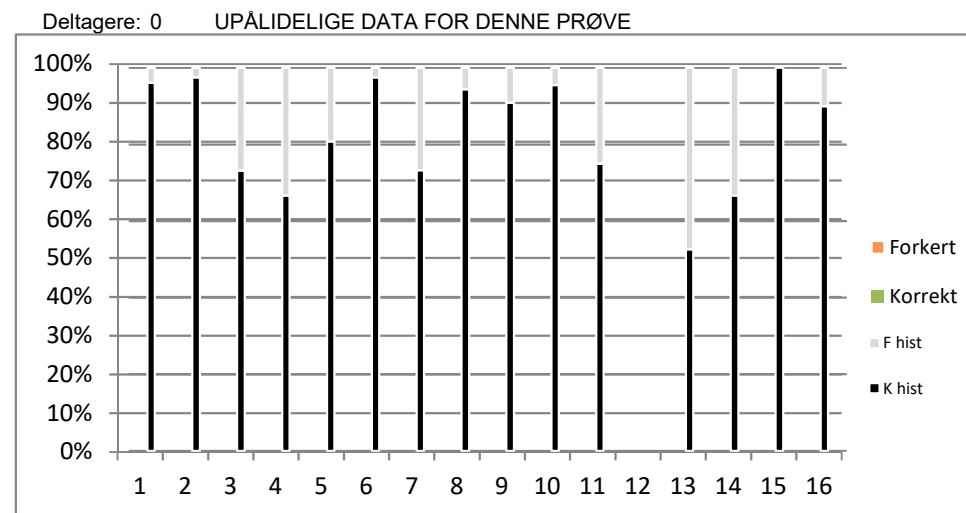
Fag 51 QNR LMR	QID	Besvarelser dec-17			Svarmuligheder				Historisk, sep 16 til DEC 17		
		Forkerte	Korrekte	Total	1	2	3	4	F	K	T
1	51 . 1 . 5	713	2 25	27	0	25	0	2	25	82	##
2	51 . 4 . 2	51	5 22	27	5	0	22	0	1	58	59
3	51 . 5 . 1	711	7 20	27	7	20	0	0	6	22	28
4	51 . 15 . 4	683	15 12	27	4	5	12	6	24	24	48
5	51 . 20 . 0	691	0 27	27	0	0	27	0	13	76	89
6	51 . 23 . 2	198	19 8	27	8	9	2	8	35	20	55
7	51 . 26 . 5	59	6 21	27	21	2	4	0	16	40	56
8	51 . 29 . 0	632	6 21	27	21	4	0	2	24	78	##
9	51 . 36 . 0	629	6 21	27	21	2	1	3	6	31	37
10	51 . 38 . 0	329	14 13	27	2	7	13	5	22	15	37
11	51 . 39 . 0	566	2 25	27	25	2	0	0	-1	39	38
12	51 . 41 . 0	208	1 26	27	1	26	0	0	1	36	37
13	51 . 50 . 0	680	9 18	27	6	18	1	2	15	22	37
14	51 . 53 . 0	710	2 25	27	1	25	1	0	2	25	27
15	51 . 55 . 3	702	15 12	27	12	7	6	2	15	40	55
16	51 . 70 . 4	708	4 23	27	2	2	0	23	4	23	27
				Checksum: 27							



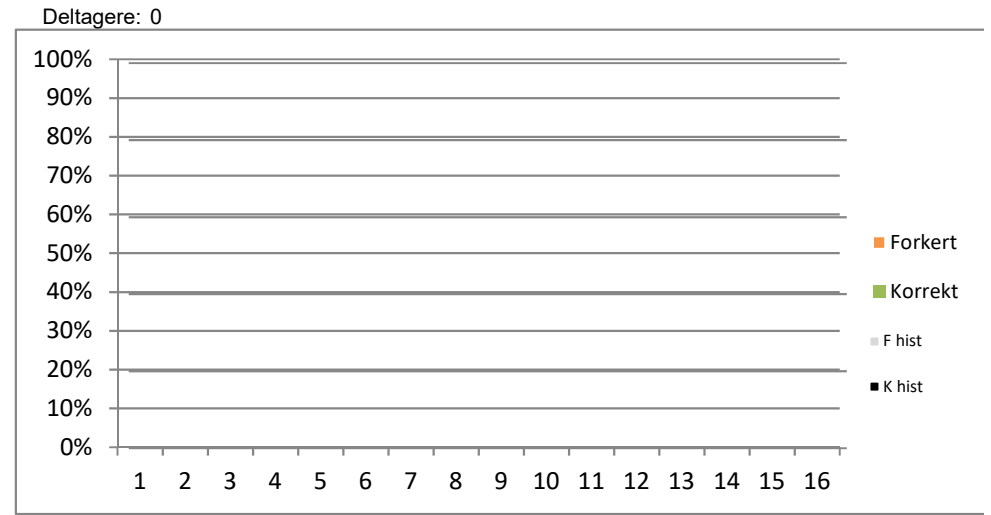
Fag 52	QNR	LMR	QID	Besvarelser dec-17			Svarmuligheder				Historisk, sep 16 til DEC 17		
				Forkerte	Korrekte	Total	1	2	3	4	F	K	T
1	51	. 1 . 5	713	0	0	0	0	0	0	0	25	82	##
2	51	. 4 . 2	51	0	0	0	0	0	0	0	1	58	59
3	51	. 15 . 4	683	0	0	0	0	0	0	0	24	24	48
4	51	. 29 . 0	632	0	0	0	0	0	0	0	24	78	##
5	51	. 36 . 1	678	0	0	0	0	0	0	0	15	24	39
6	51	. 39 . 0	714	0	0	0	0	0	0	0	15	18	33
7	51	. 55 . 3	706	0	0	0	0	0	0	0	9	4	13
8	51	. 70 . 4	707	0	0	0	0	0	0	0	2	10	12
9	52	. 8 . 7	132	0	0	0	0	0	0	0	0	2	2
10	52	. 33 . 4	134	0	0	0	0	0	0	0	1	1	2
11	52	. 35 . 7	137	0	0	0	0	0	0	0	0	0	0
12	52	. 41 . 2	139	0	0	0	0	0	0	0	0	3	3
13	52	. 45 . 1	290	0	0	0	0	0	0	0	0	0	0
14	52	. 14 . 0	320	0	0	0	0	0	0	0	0	0	0
15	52	. 61 . 1	323	0	0	0	0	0	0	0	1	2	3
16	52	. 73 . 1	326	0	0	0	0	0	0	0	0	0	0
				Checksum: 0									



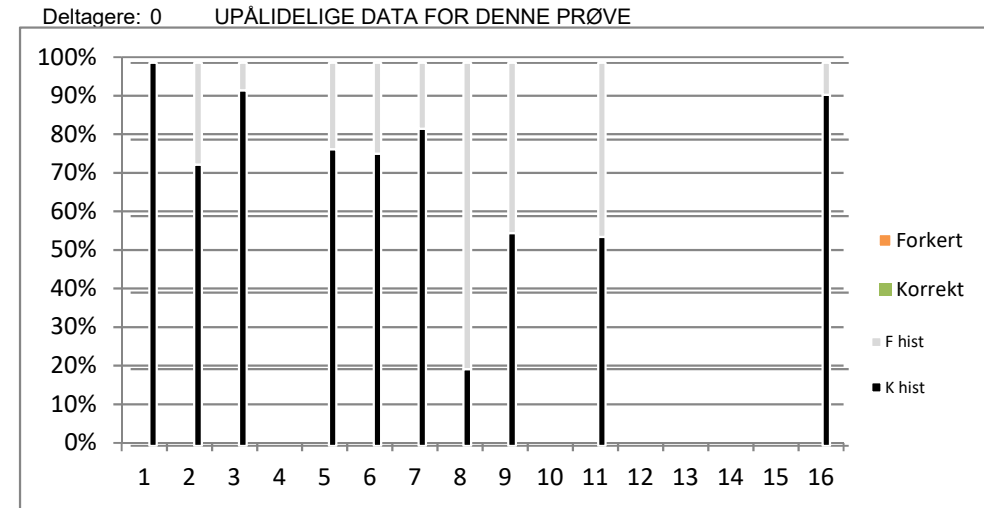
Fag 61	QNR	LMR	QID	Besvarelser dec-17			Svarmuligheder				Historisk, sep 16 til DEC 17		
				Forkerte	Korrekte	Total	1	2	3	4	F	K	T
1	6	. 1 . 0	213	0	0	0	0	0	0	0	2	50	52
2	6	. 2 . 0	212	0	0	0	0	0	0	0	1	40	41
3	6	. 3 . 8	68	0	0	0	0	0	0	0	15	41	56
4	6	. 3 . 8	70	0	0	0	0	0	0	0	1	2	3
5	6	. 6 . 0	209	0	0	0	0	0	0	0	9	38	47
6	6	. 7 . 0	74	0	0	0	0	0	0	0	1	40	41
7	6	. 8 . 0	570	0	0	0	0	0	0	0	4	11	15
8	6	. 9 . 0	221	0	0	0	0	0	0	0	1	17	18
9	6	. 11 . 0	215	0	0	0	0	0	0	0	4	40	44
10	6	. 12 . 0	223	0	0	0	0	0	0	0	2	43	45
11	6	. 13 . 0	491	0	0	0	0	0	0	0	3	9	12
12	6	. 14 . 0	571	0	0	0	0	0	0	0	0	0	0
13	6	. 15 . 0	224	0	0	0	0	0	0	0	9	10	19
14	6	. 17 . 0	577	0	0	0	0	0	0	0	1	2	3
15	6	. 18 . 0	575	0	0	0	0	0	0	0	0	9	9
16	6	. 11 . 0	222	0	0	0	0	0	0	0	3	27	30
				Checksum: 0									



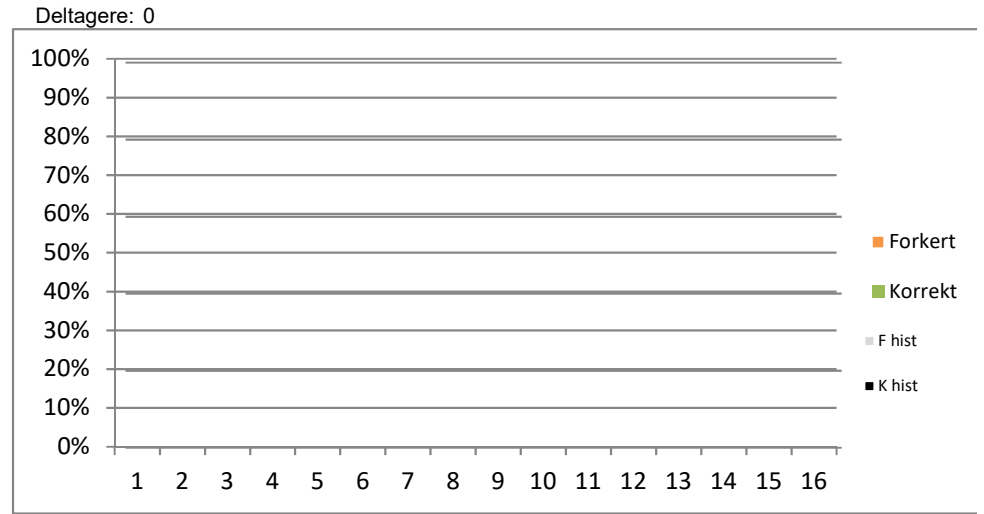
Fag 62	QNR	LMR	QID	Besvarelser dec-17			Svarmuligheder				Historisk, sep 16 til DEC 17		
				Forkerte	Korrekte	Total	1	2	3	4	F	K	T
1	0	. 0 . 0	0	0	0	0	0	0	0	0	0	0	
2	0	. 0 . 0	0	0	0	0	0	0	0	0	0	0	
3	0	. 0 . 0	0	0	0	0	0	0	0	0	0	0	
4	0	. 0 . 0	0	0	0	0	0	0	0	0	0	0	
5	0	. 0 . 0	0	0	0	0	0	0	0	0	0	0	
6	0	. 0 . 0	0	0	0	0	0	0	0	0	0	0	
7	0	. 0 . 0	0	0	0	0	0	0	0	0	0	0	
8	0	. 0 . 0	0	0	0	0	0	0	0	0	0	0	
9	0	. 0 . 0	0	0	0	0	0	0	0	0	0	0	
10	0	. 0 . 0	0	0	0	0	0	0	0	0	0	0	
11	0	. 0 . 0	0	0	0	0	0	0	0	0	0	0	
12	0	. 0 . 0	0	0	0	0	0	0	0	0	0	0	
13	0	. 0 . 0	0	0	0	0	0	0	0	0	0	0	
14	0	. 0 . 0	0	0	0	0	0	0	0	0	0	0	
15	0	. 0 . 0	0	0	0	0	0	0	0	0	0	0	
16	0	. 0 . 0	0	0	0	0	0	0	0	0	0	0	
				Checksum: 0									



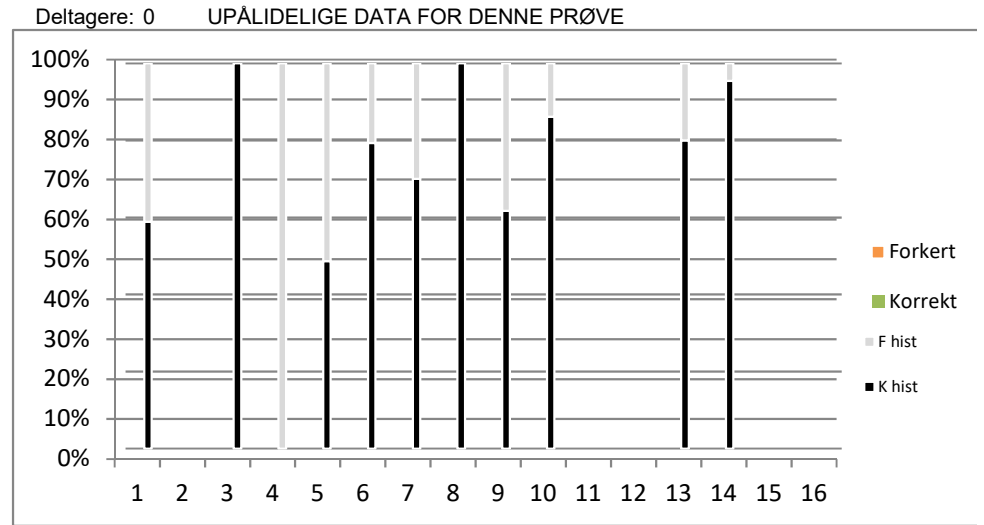
Fag 71	QNR	LMR	QID	Besvarelser dec-17			Svarmuligheder				Historisk, sep 16 til DEC 17		
				Forkerte	Korrekte	Total	1	2	3	4	F	K	T
1	7	. 3 . 0	81	0	0	0	0	0	0	0	25	25	
2	7	. 13 . 0	295	0	0	0	0	0	0	17	47	64	
3	7	. 15 . 0	638	0	0	0	0	0	0	1	13	14	
4	7	. 23 . 0	501	0	0	0	0	0	0	0	0	0	
5	7	. 24 . 0	306	0	0	0	0	0	0	9	31	40	
6	7	. 26 . 0	235	0	0	0	0	0	0	9	29	38	
7	7	. 30 . 0	231	0	0	0	0	0	0	6	29	35	
8	71	. 1 . 0	291	0	0	0	0	0	0	20	5	25	
9	71	. 3 . 0	238	0	0	0	0	0	0	4	5	9	
10	71	. 7 . 0	342	0	0	0	0	0	0	0	0	0	
11	71	. 5 . 0	583	0	0	0	0	0	0	5	6	11	
12	71	. 6 . 0	584	0	0	0	0	0	0	0	0	0	
13	71	. 7 . 0	500	0	0	0	0	0	0	0	0	0	
14	71	. 8 . 0	234	0	0	0	0	0	0	0	0	0	
15	71	. 10 . 0	346	0	0	0	0	0	0	0	0	0	
16	72	. 6 . 1	652	0	0	0	0	0	0	2	22	24	
				Checksum: 0									



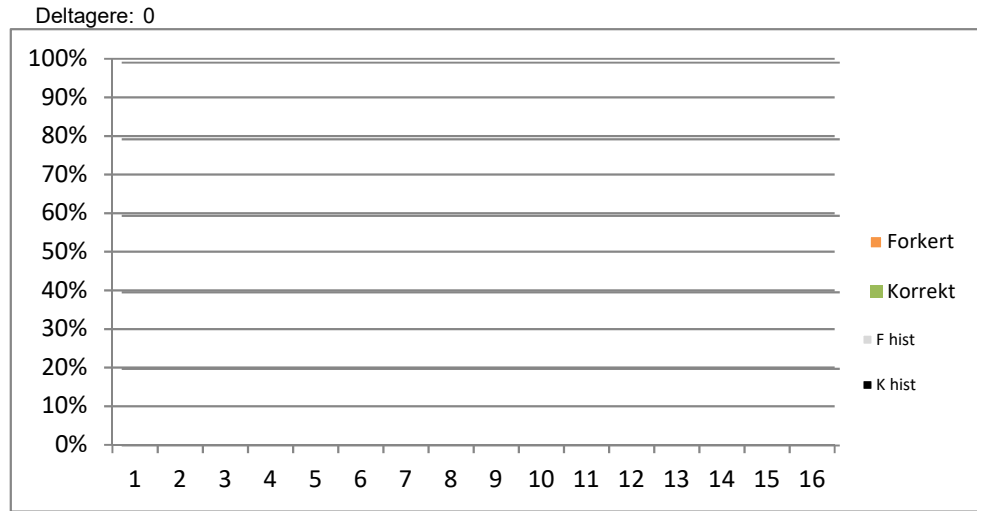
Fag 72	QNR	LMR	QID	Besvarelser dec-17			Svarmuligheder				Historisk, sep 16 til DEC 17		
				Forkerte	Korrekte	Total	1	2	3	4	F	K	T
1	0	. 0 . 0	0	0	0	0	0	0	0	0	0	0	
2	0	. 0 . 0	0	0	0	0	0	0	0	0	0	0	
3	0	. 0 . 0	0	0	0	0	0	0	0	0	0	0	
4	0	. 0 . 0	0	0	0	0	0	0	0	0	0	0	
5	0	. 0 . 0	0	0	0	0	0	0	0	0	0	0	
6	0	. 0 . 0	0	0	0	0	0	0	0	0	0	0	
7	0	. 0 . 0	0	0	0	0	0	0	0	0	0	0	
8	0	. 0 . 0	0	0	0	0	0	0	0	0	0	0	
9	0	. 0 . 0	0	0	0	0	0	0	0	0	0	0	
10	0	. 0 . 0	0	0	0	0	0	0	0	0	0	0	
11	0	. 0 . 0	0	0	0	0	0	0	0	0	0	0	
12	0	. 0 . 0	0	0	0	0	0	0	0	0	0	0	
13	0	. 0 . 0	0	0	0	0	0	0	0	0	0	0	
14	0	. 0 . 0	0	0	0	0	0	0	0	0	0	0	
15	0	. 0 . 0	0	0	0	0	0	0	0	0	0	0	
16	0	. 0 . 0	0	0	0	0	0	0	0	0	0	0	
				Checksum: 0									



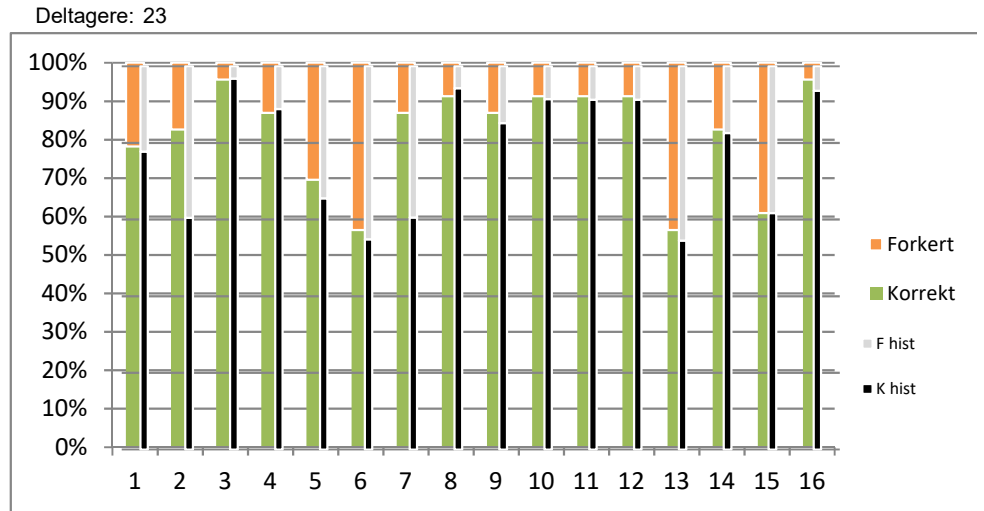
Fag 81	QNR	LMR	QID	Besvarelser dec-17			Svarmuligheder				Historisk, sep 16 til DEC 17		
				Forkerte	Korrekte	Total	1	2	3	4	F	K	T
1	8	. 13 . 0	98	0	0	0	0	0	0	23	33	56	
2	8	. 18 . 0	515	0	0	0	0	0	0	0	0	0	
3	8	. 29 . 0	260	0	0	0	0	0	0	0	22	22	
4	8	. 34 . 0	657	0	0	0	0	0	0	5	0	5	
5	8	. 37 . 0	103	0	0	0	0	0	0	19	18	37	
6	8	. 40 . 0	513	0	0	0	0	0	0	6	23	29	
7	8	. 43 . 0	251	0	0	0	0	0	0	6	14	20	
8	8	. 42 . 0	252	0	0	0	0	0	0	0	10	10	
9	8	. 46 . 0	112	0	0	0	0	0	0	13	21	34	
10	8	. 53 . 0	355	0	0	0	0	0	0	4	25	29	
11	8	. 60 . 0	597	0	0	0	0	0	0	0	0	0	
12	8	. 64 . 0	255	0	0	0	0	0	0	0	0	0	
13	8	. 66 . 0	522	0	0	0	0	0	0	1	4	5	
14	81	. 1 . 0	353	0	0	0	0	0	0	1	21	22	
15	81	. 1 . 0	357	0	0	0	0	0	0	0	0	0	
16	81	. 12 . 0	111	0	0	0	0	0	0	0	0	0	
				Checksum: 0									



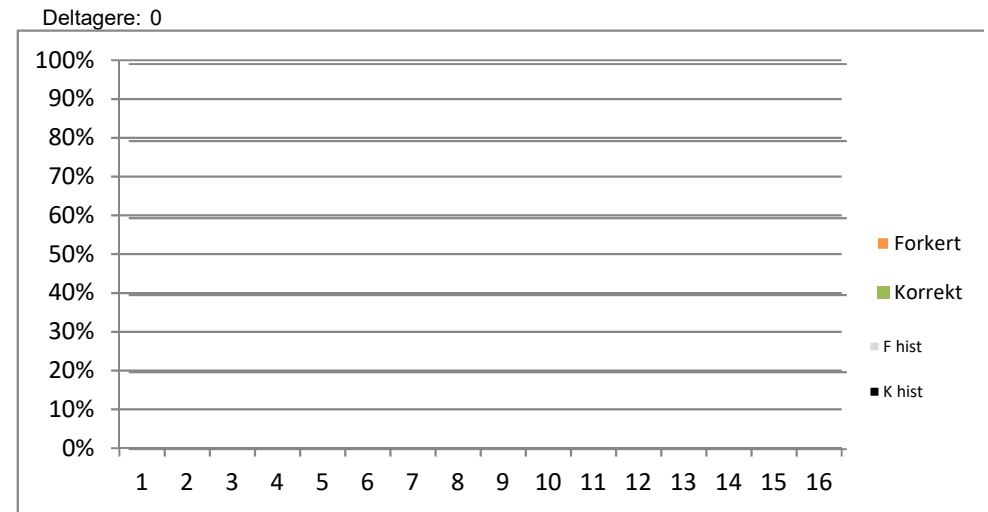
Fag 82	QNR	LMR	QID	Besvarelser dec-17			Svarmuligheder				Historisk, sep 16 til DEC 17		
				Forkerte	Korrekte	Total	1	2	3	4	F	K	T
1	0	. 0 . 0	0	0	0	0	0	0	0	0	0	0	
2	0	. 0 . 0	0	0	0	0	0	0	0	0	0	0	
3	0	. 0 . 0	0	0	0	0	0	0	0	0	0	0	
4	0	. 0 . 0	0	0	0	0	0	0	0	0	0	0	
5	0	. 0 . 0	0	0	0	0	0	0	0	0	0	0	
6	0	. 0 . 0	0	0	0	0	0	0	0	0	0	0	
7	0	. 0 . 0	0	0	0	0	0	0	0	0	0	0	
8	0	. 0 . 0	0	0	0	0	0	0	0	0	0	0	
9	0	. 0 . 0	0	0	0	0	0	0	0	0	0	0	
10	0	. 0 . 0	0	0	0	0	0	0	0	0	0	0	
11	0	. 0 . 0	0	0	0	0	0	0	0	0	0	0	
12	0	. 0 . 0	0	0	0	0	0	0	0	0	0	0	
13	0	. 0 . 0	0	0	0	0	0	0	0	0	0	0	
14	0	. 0 . 0	0	0	0	0	0	0	0	0	0	0	
15	0	. 0 . 0	0	0	0	0	0	0	0	0	0	0	
16	0	. 0 . 0	0	0	0	0	0	0	0	0	0	0	
				Checksum: 0									



Fag 91	QNR	LMR	QID	Besvarelser dec-17			Svarmuligheder				Historisk, sep 16 til DEC 17		
				Forkerte	Korrekte	Total	1	2	3	4	F	K	T
1	9	. 1 . 0	273	5	18	23	0	18	3	2	10	35	45
2	9	. 9 . 0	116	4	19	23	3	19	1	0	17	26	43
3	9	. 12 . 0	437	1	22	23	0	22	1	0	1	30	31
4	9	. 15 . 0	275	3	20	23	2	0	20	1	3	24	27
5	9	. 19 . 0	282	7	16	23	16	6	0	1	21	40	61
6	9	. 40 . 0	123	10	13	23	1	9	13	0	14	17	31
7	9	. 43 . 0	280	3	20	23	20	3	0	0	15	23	38
8	9	. 44 . 0	431	2	21	23	0	21	2	0	2	33	35
9	9	. 48 . 0	363	3	20	23	20	2	1	0	4	23	27
10	9	. 49 . 0	671	2	21	23	1	1	21	0	4	43	47
11	9	. 51 . 0	667	2	21	23	0	21	1	1	2	21	23
12	9	. 63 . 0	533	2	21	23	0	2	0	21	2	21	23
13	9	. 68 . 0	432	10	13	23	1	13	8	1	15	18	33
14	9	. 75 . 0	439	4	19	23	19	1	2	1	4	19	23
15	9	. 81 . 0	535	9	14	23	1	1	7	14	18	29	47
16	9	. 98 . 0	283	1	22	23	22	0	0	1	3	44	47
				Checksum: 23									



Fag 92	QNR	LMR	QID	Besvarelser dec-17			Svarmuligheder				Historisk, sep 16 til DEC 17		
				Forkerte	Korrekte	Total	1	2	3	4	F	K	T
1	0	0	0	0	0	0	0	0	0	0	0	0	0
2	0	0	0	0	0	0	0	0	0	0	0	0	0
3	0	0	0	0	0	0	0	0	0	0	0	0	0
4	0	0	0	0	0	0	0	0	0	0	0	0	0
5	0	0	0	0	0	0	0	0	0	0	0	0	0
6	0	0	0	0	0	0	0	0	0	0	0	0	0
7	0	0	0	0	0	0	0	0	0	0	0	0	0
8	0	0	0	0	0	0	0	0	0	0	0	0	0
9	0	0	0	0	0	0	0	0	0	0	0	0	0
10	0	0	0	0	0	0	0	0	0	0	0	0	0
11	0	0	0	0	0	0	0	0	0	0	0	0	0
12	0	0	0	0	0	0	0	0	0	0	0	0	0
13	0	0	0	0	0	0	0	0	0	0	0	0	0
14	0	0	0	0	0	0	0	0	0	0	0	0	0
15	0	0	0	0	0	0	0	0	0	0	0	0	0
16	0	0	0	0	0	0	0	0	0	0	0	0	0
				Checksum: 0									



BEMÆRK: Spørgsmål der er fjernet fra banken optræder i søjlediagrammet som at ingen har svaret korrekt. Dette kan identificeres ved at der ikke optræder historiske data i søjlediagrammet.